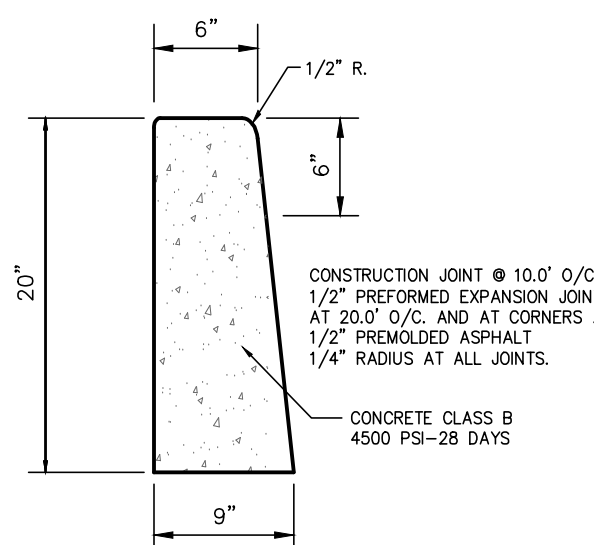
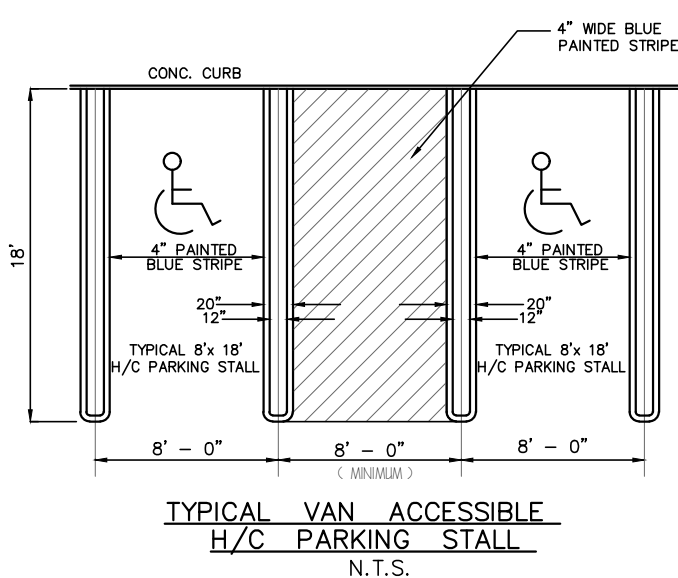
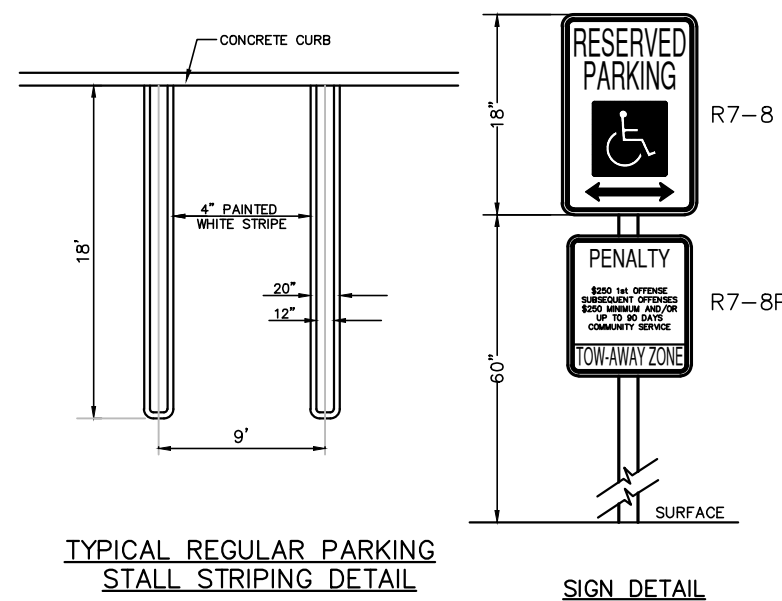


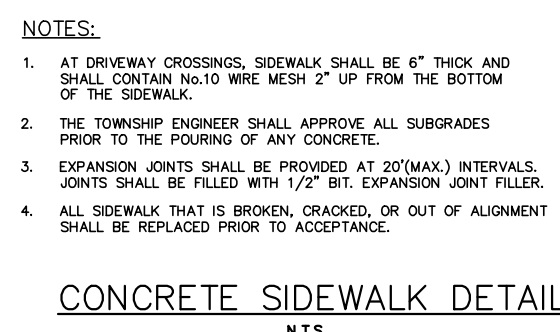
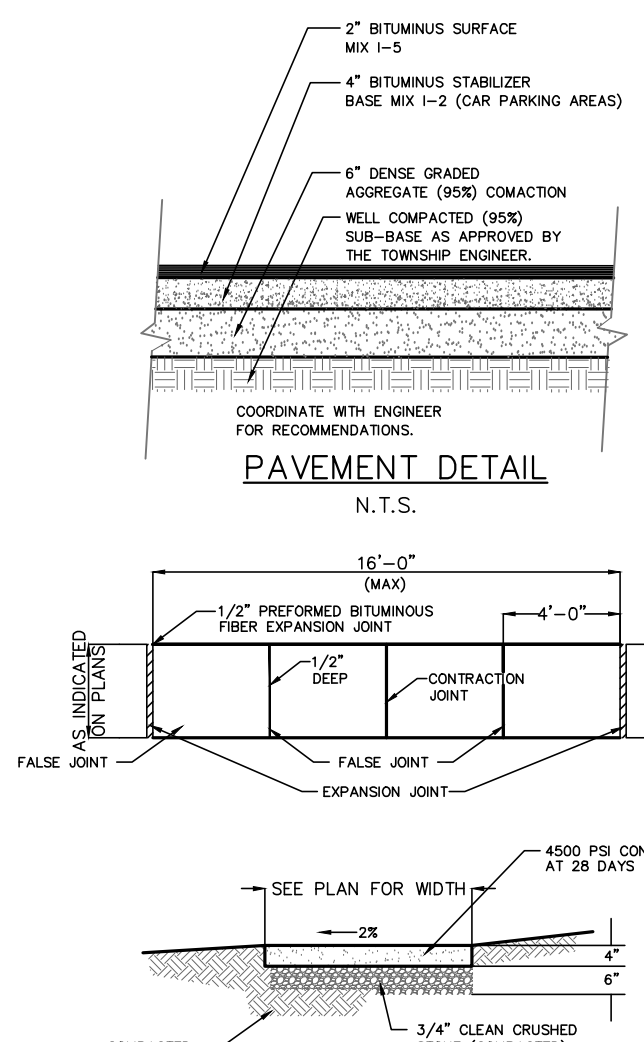
GENERAL NOTES
 ALL SIGNS AND PAVEMENT MARKING SHALL CONFORM TO MUTCD.

CONSTRUCTION CASTINGS:
 NOTE THAT, ALL CASTING SHALL BE OF U.S. MANUFACTURE AND NJDOT APPROVED. IF OTHER THAN CAMPBELL, NEENAH, BRIDGESTATE, EMPORIA OR QUIRIN CASTING ARE PLANNED TO BE USED, COMPLETE DATA MUST BE SUBMITTED INCLUDING BUT NOT NECESSARILY LIMITED TO AN AFFIDAVIT CERTIFYING THAT THE CASTINGS WERE MADE IN THE U.S.; LOAD CAPACITY BASED ON THE STANDARD HIGHWAY LOADING; WEIGHTS AND CONFIGURATIONS OF THE CASTINGS AND METALLURGICAL ANALYSIS. ALL GRATES ARE TO BE "BICYCLE SAFE".

ALL MATERIALS, WORKMANSHIP AND CONSTRUCTION FOR SITE IMPROVEMENTS SHOWN HEREON SHALL BE IN ACCORDANCE WITH THE FOLLOWING, AS APPLICABLE:
 A- NEW JERSEY DEPARTMENT OF TRANSPORTATION "STANDARD SPECIFICATIONS FOR ROAD AND BRIDGE CONSTRUCTION".
 B- CURRENT PREVAILING MUNICIPAL AND/OR COUNTY SPECIFICATIONS, STANDARDS AND REQUIREMENTS.
 C- CURRENT PREVAILING UTILITY COMPANY/AUTHORITY SPECIFICATIONS, STANDARDS AND REQUIREMENTS.
 D- STATE OF NEW JERSEY B.O.C.A. CODE AND BARRIER-FREE DESIGN REGULATIONS AS CURRENTLY AMENDED.

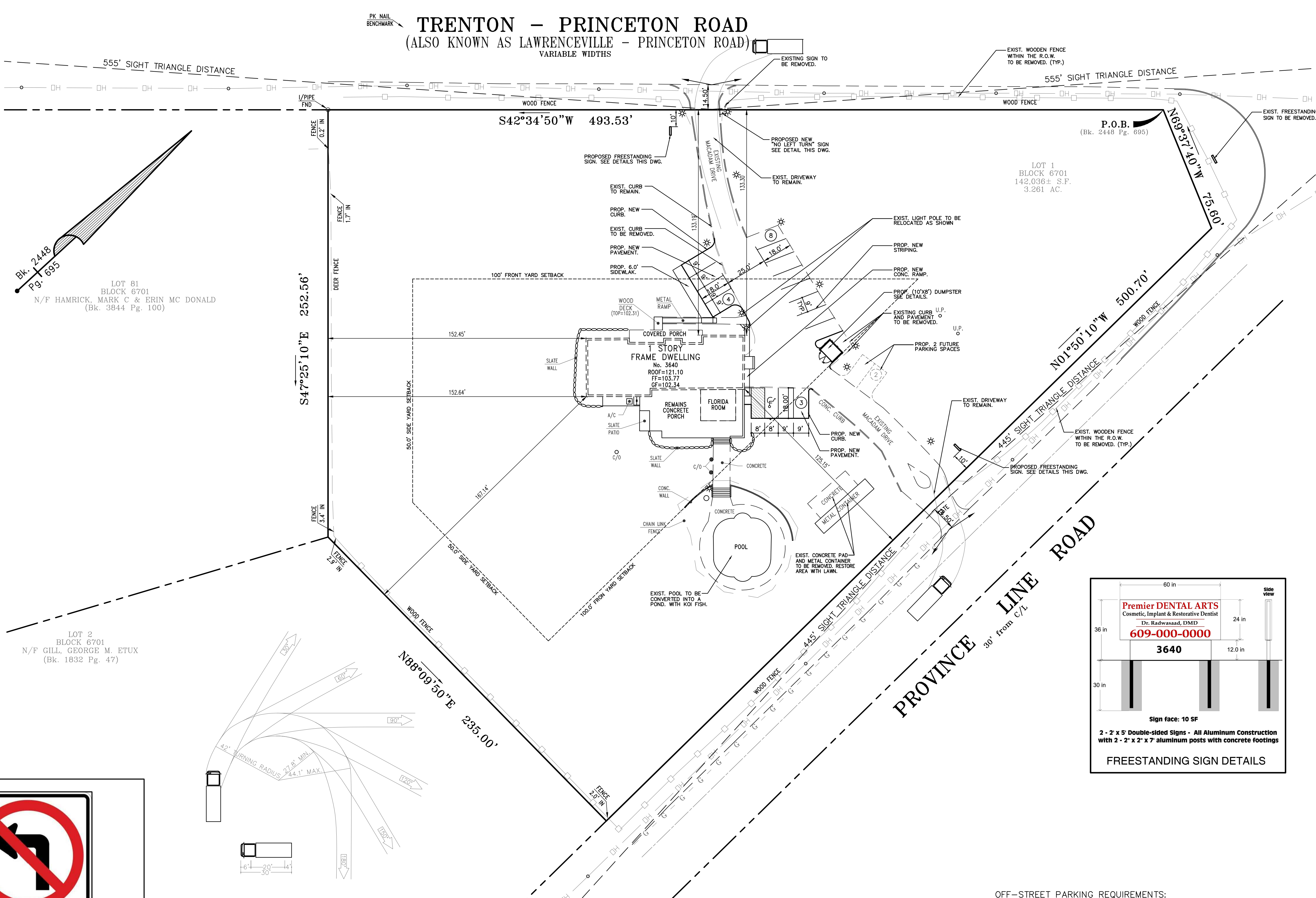


TYP. CONCRETE CURB DETAIL
 N.T.S.



CONCRETE SIDEWALK DETAIL
 N.T.S.

NOTES:
 1. AT DRIVEWAY CROSSINGS, SIDEWALK SHALL BE 6\"/>



LOT 81
 BLOCK 6701
 N/F HAMRICK, MARK C & ERIN MC DONALD
 (Bk. 3844 Pg. 100)

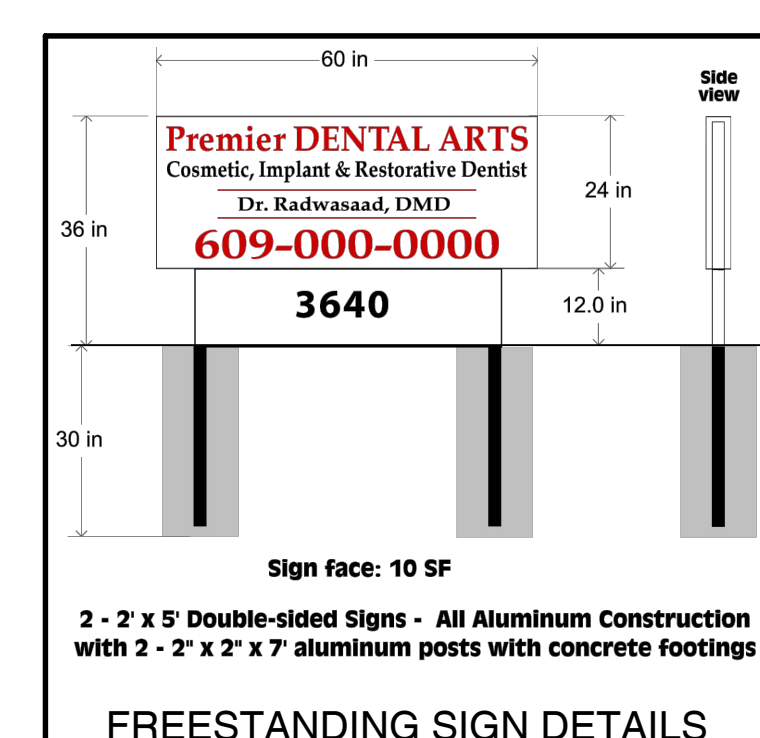
LOT 2
 BLOCK 6701
 N/F GILL, GEORGE M. ETUX
 (Bk. 1832 Pg. 47)

LOT 1
 BLOCK 6701
 142,036± S.F.
 3.261 AC.



R3-2 No Left Turn Sign
 Reflective Sheeting on Aluminum
 Radius Corners
 3/8\"/>

NO LEFT TURN SIGN DETAILS



OFF-STREET PARKING REQUIREMENTS:
 5 STALLS PER 1,000 S.F. OF FLOOR AREA (MEDICAL OFFICE)
 (±3,400 S.F. / 1,000 S.F.) x 5 = 17 SPACES
 TOTAL PARKING REQUIRED = 17 SPACES
 TOTAL PARKING PROVIDED = 17 SPACES *
 * INCLUDING 2 FUTURE SPACES

4	UPDATED PARKING & TRASH ENCLOSURE LAYOUT.	10-13-2021
3	REVISED AS PER TOWNSHIP COMMENT LETTERS.	07-19-2021
2	REVISED AS PER TOWNSHIP COMPLETENESS LETTER DATED 04-30-2021.	05-04-2021
1	FOR FILING.	03-29-2021
No.	REVISION	DATE

CLIENT:
 SMILES REAL ESTATE, LLC.
 3640 TRENTON - PRINCETON ROAD
 TOWNSHIP OF LAWRENCE
 MERCER COUNTY, NEW JERSEY

MEH CONSULTING ENGINEERS, INC.
 www.mehengineers.com
 CIVIL ENGINEERS - STRUCTURAL ENGINEERS
 ENVIRONMENTAL AND HYDRAULIC ENGINEERS
 825 BLOOMFIELD AVENUE SUITE 106
 VERONA, NEW JERSEY 07094
 PHONE: (973) 239-2626 FAX: (973) 239-6356

MOHAMMED EL-HAWWAT, P.E.
 NEW JERSEY PROFESSIONAL ENGINEER LICENSE NO. 38475

DATE: 10-13-2021

DIMENSION PLAN

PROPOSED SITE IMPROVEMENT
 FOR
 SMILES REAL ESTATE, LLC.
 LOT 1, BLOCK 6701
 TOWNSHIP OF LAWRENCE
 MERCER COUNTY, NEW JERSEY

DATE: 03-29-2021 SCALE: 1"=30' DRAWN BY: BHS SHEET#
 W.O.: 21-011 CAD FILE: V-3N4 CHECKED BY: MEH

Y-3